



Baroque Festival Bracelet

A Must Keep

Product Review

Projects

By MC Maker,
Jude Goswell x

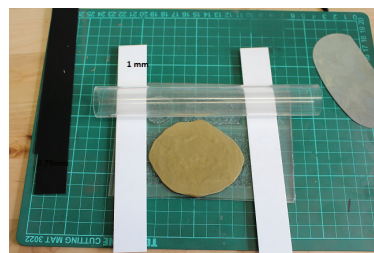
Project Level: Intermediate

Materials:

- * Goldie Lemon Brass Clay (Pre-mixed)
- * Premium Coconut Carbon
- * Kiln & Firing Container
- * Olive Oil
- * Brass Chain
- * Brass Jump Rings
- * Brass Lobster Clasp
- * Spacer Set
- * Hatties Texture Mat (#55104)
- * QuikArt Stylus Needle Tool
- * QuikArt Clay Saving Template (#55147)
- * Kidney Shape Clay Cutter
- * Clay Roller
- * Chisel Tip Clay Shaper
- * Sanding Sponge Set
- * Work Mat
- * Cling Film
- * Mini Files
- * Make-up Applicators
- * Bracelet Mandrel (or tin can)
- * Plastic/Rawhide Mallet



Step 1: Prepare your work surface and gather all tools needed to roll out and cut the clay.

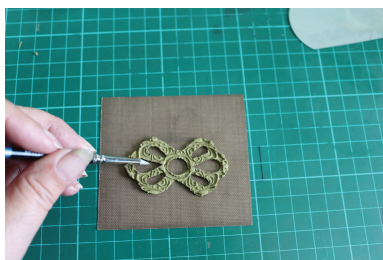


Step 2: Roll out the clay to 1.75mm. Lay the clay on the lightly oiled texture plate and roll again using the 1mm spacers.

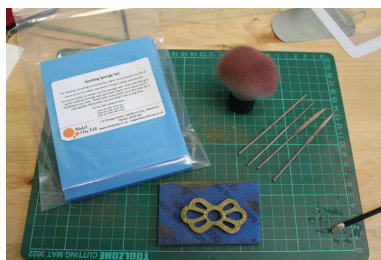


Step 3: Customise the clay saving template - place the template onto the clay and use the stylus tool to cut out part of the shape that you want.

Projects



Step 4: Use the kidney shaped cutter to lift the clay onto a Teflon sheet or a lightly oiled playing card. Use the tip of the clay shaper to ensure the shape hasn't distorted and then dry the clay thoroughly.



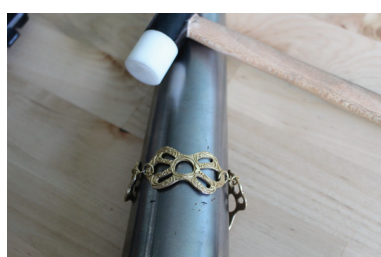
Step 5: Once the piece is completely dry, refine the clay using sponge sanding pads, mini files and a damp sponge tipped make-up applicator to smooth the edges and inside of cut-outs. Make sure the pieces dry thoroughly before firing.



Step 6: Place your refined piece in a stainless steel container on a bed of activated coconut carbon (minimum 1cm depth) and fire in 2 stages: 1st stage - 580°C for 30mins with the container open. 2nd stage - cover with charcoal (a further 3-5cm) and fire at 870°C for 2 hours, covered.



Step 7: Once your piece has cooled, brush it with a stainless steel brush to remove any firescale. Work through the sanding pad grit levels, starting with the extra fine. Tumble polish for at least one hour. Finish with 3M radial disks and a final polish with Renaissance Wax.



Step 8: Shape the individual elements so that they have a soft curve by bending each piece around a mandrel - use a mallet if necessary. Lay the element on your wrist - it should follow the curve.



Step 9: Join the elements with chain or jump rings and add a clasp to finish the bracelet.

Materials available at:
www.metalclay.co.uk

