

Gold Kissed Sun Pendant



A Must Keep

Product Review

Projects

by Aida x

Summary

This project is slightly trickier, and definitely demands a bit of patience. The results are gorgeous however, and definitely worth it.

Learn how to add gorgeous 22 carat accents to your pieces. This adds such a luxurious finish to any design.

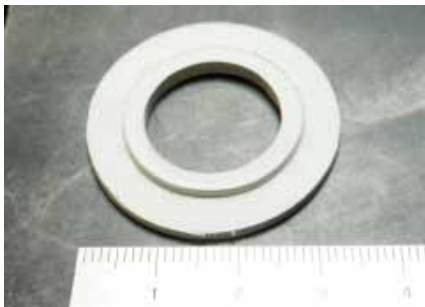
Useful Tip

1) Gold Paste can be an expensive option. If your budget can't stretch, or its not vital to your design having 22ct accents, you could use some Pebeo glass paints, or even gilders paste.

2) Make your own silver paste by mixing your silver scraps, shavings and sandings with some water.

Materials

Art Clay Silver 650 Clay - 20gm
Work Surface
Roller
Spacers - 1mm
Spacers - 1.5mm
Files
Rubber Block
Sanding Pad
Art Clay Silver 650 Paste
Toothpick
Firing Method
Art Clay Gold Paste
Extra Soft Brass Brush
Pro-Polishing Pad



Step 1

Roll out and assemble your clay like above. The top circle is 1mm thick, and the bottom circle is 1.5mm thick. Use some water to join the two pieces securely.



Step 2

Draw your design onto the clay. Cut out your design using files. (This bit can be a bit tricky, so be patient and careful).



Step 3

Refine any rough edges using your sanding pad. Sand the edges of the flames more for a lovely tapered look.

**Step 4**

Roughly apply some paste to the outside of your piece with a toothpick. This adds a nice organic texture to it.

**Step 5**

Once dry, fire your piece. Once fired, don't brush or polish, just add your gold paste to the edges. Fire again and finish.