

# Inkless Prints

A Must Keep

Product Review

Projects

by candy x

## What are Inkless Prints?

Inkless prints are produced from using inkless wipes and paper. The inkless wipe is wiped across the hand, the hand is then pressed onto the inkless paper, and as soon as you release your hand you will see your print start to develop.

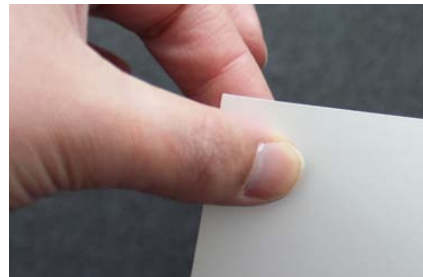
You can use this for hands, feet, fingerprints, paws, and much more!

## Testing Your Paper

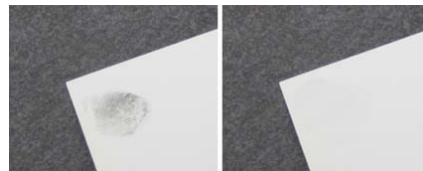
First of all you need to check which side of the paper is the correct side. (Only one side will develop your print).

Start by opening your inkless wipe and touching it with two fingers.

With the same two fingers pinch the corners of your paper (make sure you touch both sides of the paper).



From this, you should see your fingerprint develop on one side, and the other stay blank.



2) Press your hand firmly on the paper (make sure to use the side your finger print is on). Try not to move it as this may smudge your print.



3) Remove your hand and watch the print develop!



## Making Your Inkless Print?

1) Rub the wipe completely over your hand.



- After making your inkless print its advisable to wash any exposed skin with soap and water.

- You can reuse your wipe, but the older it is, the weaker the print. Store your opened wipes in a grip seal bag in a cool environment.