

HOW TO USE THE METAL CLAY FINDINGS'

EMBEDDABLE CUFFLINKS

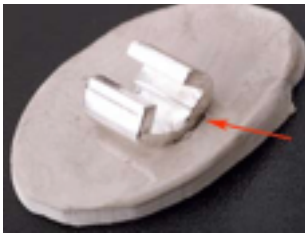
Step 1



Set the tabbed cufflink base mount into fresh metal clay (at least 1-1.5mm thick) as shown in the photo. You can also cut out a shape of fresh clay and add to a dry piece, or build up a little base with syringe clay, and then push the mount into this.

Push in until the base of the mount is in full contact with the clay as shown in photo.

Step 2



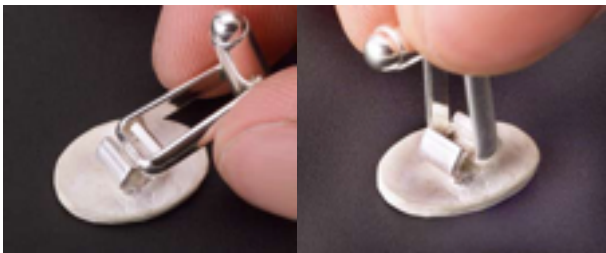
After the cufflink base mount has been set into the clay, fill any gaps, like shown in the picture with fresh clay, syringe, or paste. Use a clay shaper to push the clay into the gap, and to push the clay up against the base mount.



Step 3

After filling the voids and smoothing the metal clay against the cufflink mount, fire according to the metal clay manufacturer's recommended firing schedule.

Step 4



After firing and finishing, align the cufflink finding with the embedded mount by tipping it, so it fits between the clamps of the mount. Once inserted between the clamps of the mount, tip it up to a vertical position.

Step 5

While holding the cufflink in the vertical position, squeeze the mount clamps closed, (preferably using parallel action pliers) until the cufflink finding is securely captured and locked into place.

Your cufflink is ready to use!

