

POLYMER CLAY

FOLLOW THESE STEPS TO SHAPE & POLISH POLYMER CLAY

SETUP

1



Apply CUSHIONS to BACKPADS.
FELT & BUFF don't need cushions.

2



Apply abrasives onto BACKPADS
(with the CUSHIONS applied).

3



Prepare FELT DISC as shown in your
USER'S GUIDE and VIDEO



SAFETY FIRST!
Always wear eye
and respiratory
protection.

FLAT PIECES

IMPORTANT: Stay within your see-thru area of the disc. Avoid using the edge to prevent cutting grooves in the clay.

1



STEP 1 SHAPE your clay

Use **3M Microfinishing Film** 15 Mic. (Orange/Translucent)
Hold the piece FLAT against the spinning abrasive.
Speed: Medium / Low Speed

ABRASIVES USED

1

FINE 15 Mic
Item# AM-13015-6



2



STEP 2 REMOVE Scratches

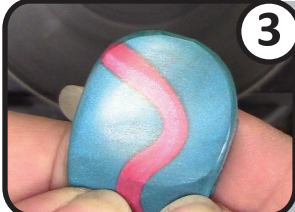
Use **3M Microfinishing Film** 9 Mic. (Translucent abrasive)
Hold the piece FLAT against the spinning abrasive.
Speed: Low Speed

2

VERY FINE 9 Mic
Item# AM-13009-3



3



STEP 3 Refine the surface - Produces a smooth satin finish

Use **JOOLTOOL Felt Disc** (White See-Thru Wheel) **WITHOUT COMPOUND!**
Make FLAT contact with the Felt Disc and keep moving
the piece as needed to polish all necessary areas.
SPEED: Low Speed **HINT:** Higher speeds remove material!
The speed determines the amount of material that is polished off.

3

FELT DISC
Item# B-301



4



STEP 4 BUFF your clay

Use **JOOLTOOL Buffing Wheel** (White Fluffy Wheel)
Hold the piece against the edge of the spinning Buff.
Speed: Start with Med/High Speed, Finish with Slow Speed.
DO NOT USE COMPOUND!

4

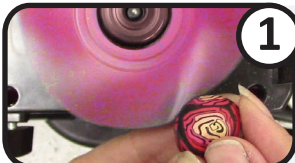
BUFFING WHEEL
Item# B-9335



FOLLOW STEPS FROM TOP TO BOTTOM

ROUNDED AND DETAILED PIECES

1



STEP 1 SAND your clay

Use **3M Radial Brushes** (Pumice - Pink)
Hold the piece against the edge of the spinning brush.
Speed: VERY LOW; use VERY LIGHT PRESSURE

NOTE: Higher speeds and excessive pressure will remove material!

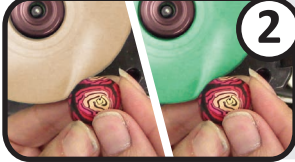
ABRASIVES USED

1

Pumice (pink)
Item# R-343-PUM



2



STEP 2 PRE-POLISH (OPTIONAL) - DO NOT USE COMPOUND!

Use **3M Radial Brushes** (6 & 1 Micron - Peach and Green)
Hold the piece against the edge of the spinning brush.
Speed: VERY LOW; use VERY LIGHT PRESSURE

NOTE: Higher speeds and excessive pressure will remove

2a

6 Micron
Item# R-342-6



2b

1 Micron
Item# R-341-1



3



STEP 3 PRE-POLISH your clay - DO NOT USE COMPOUND!

Use **JOOLTOOL Felt Disc** (White See-Thru Wheel)
Make FLAT contact with the Felt Disc and keep moving
the piece as needed to polish all necessary areas.
Speed: VERY LOW; use VERY LIGHT PRESSURE, DO NOT PRESS HARD

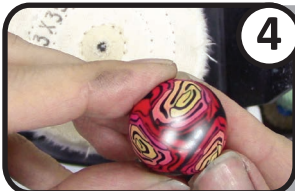
NOTE: Higher speeds and excessive pressure will remove material!

3

FELT DISC
Item# B-301



4



STEP 4 BUFF your clay - DO NOT USE COMPOUND!

Use **JOOLTOOL Buffing Wheel** (White Fluffy Wheel)
Hold the piece against the edge of the spinning Buff.
Speed: Start with Med/High Speed, Finish w/ Slow Speed

Use VERY LIGHT PRESSURE, the longer you buff, the higher the polish

4

BUFFING WHEEL
Item# B-9335



FOLLOW STEPS FROM TOP TO BOTTOM